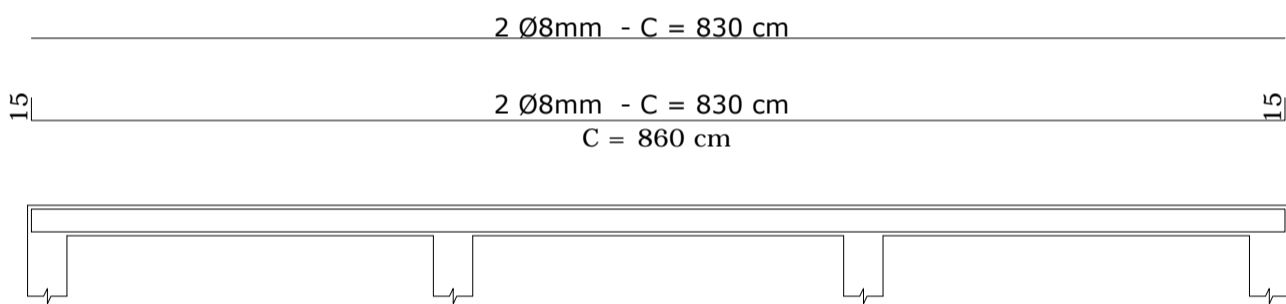
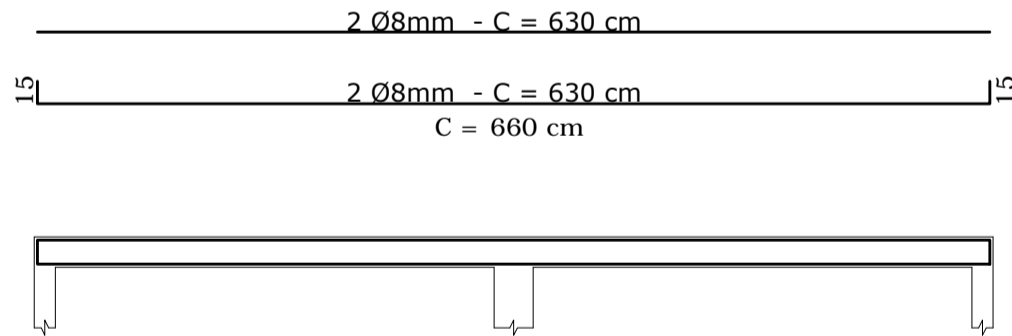


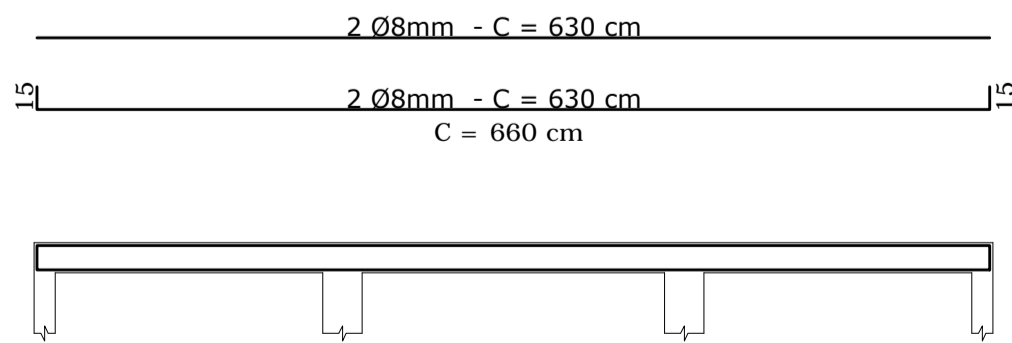
PLANTA FUNDAÇÃO - ESTACAS, BLOCOS E VIGAS
ESCALA 1:50



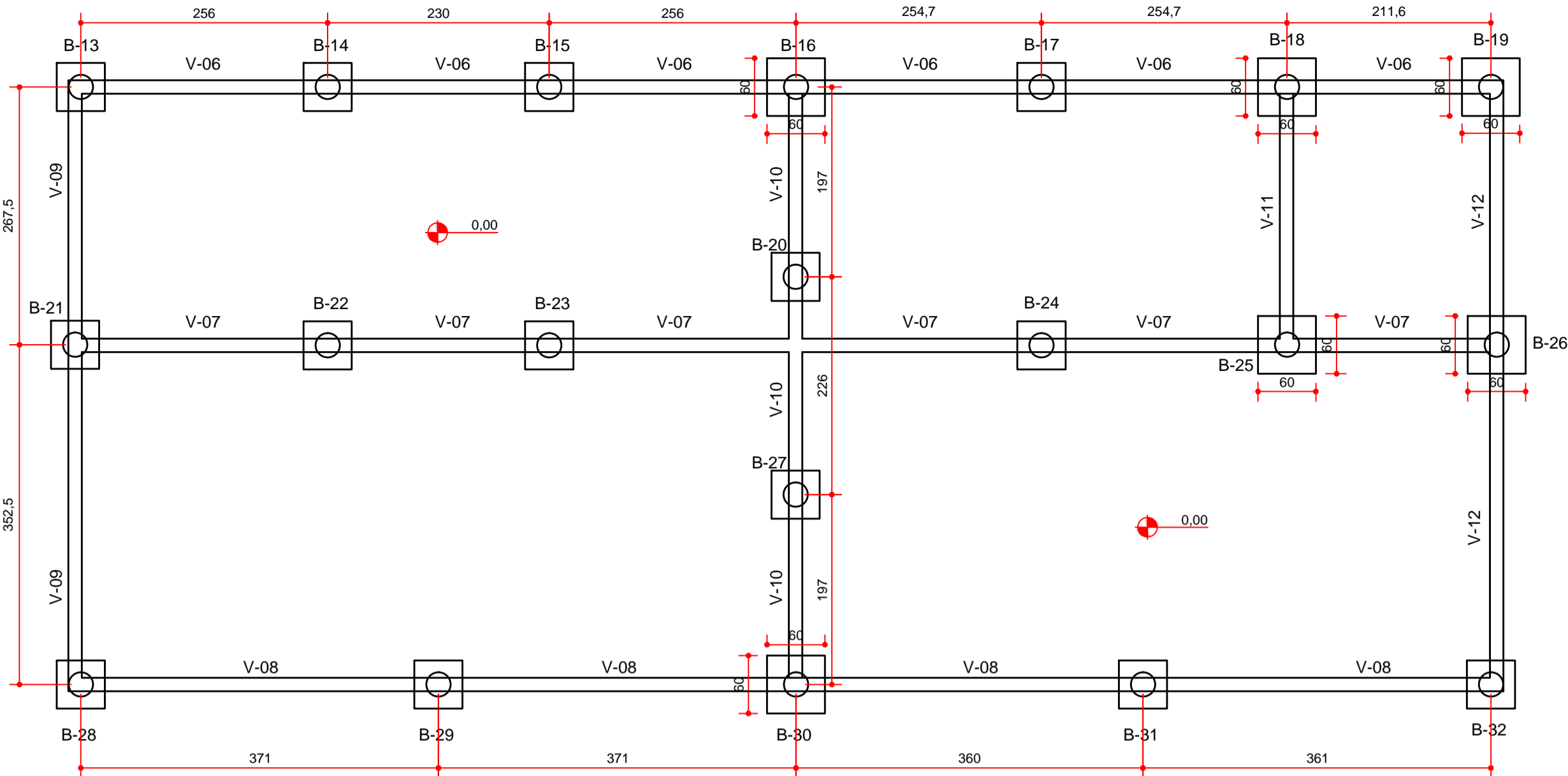
ESQUEMA VIGAS V-01=V-02=V-03
ESCALA 1:50



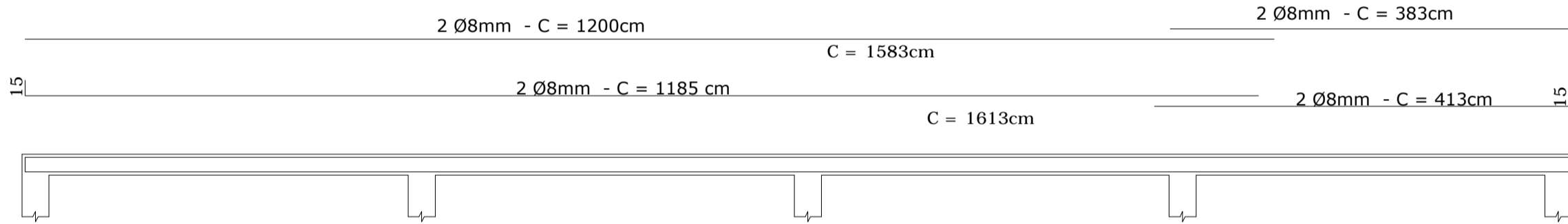
ESQUEMA VIGAS V-04=V-05
ESCALA 1:50



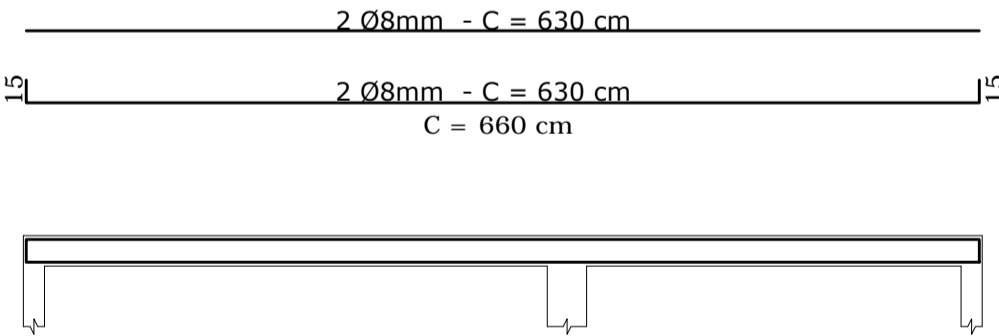
ESQUEMA VIGA V10
ESCALA 1:50



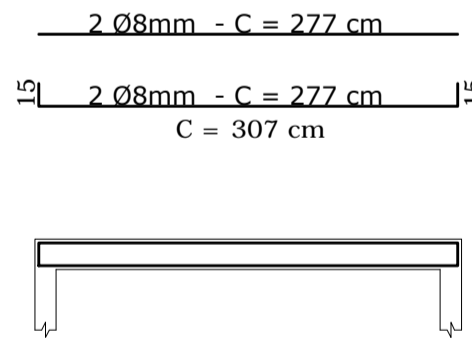
PLANTA FUNDAÇÃO - ESTACAS, BLOCOS E VIGAS
ESCALA 1:50



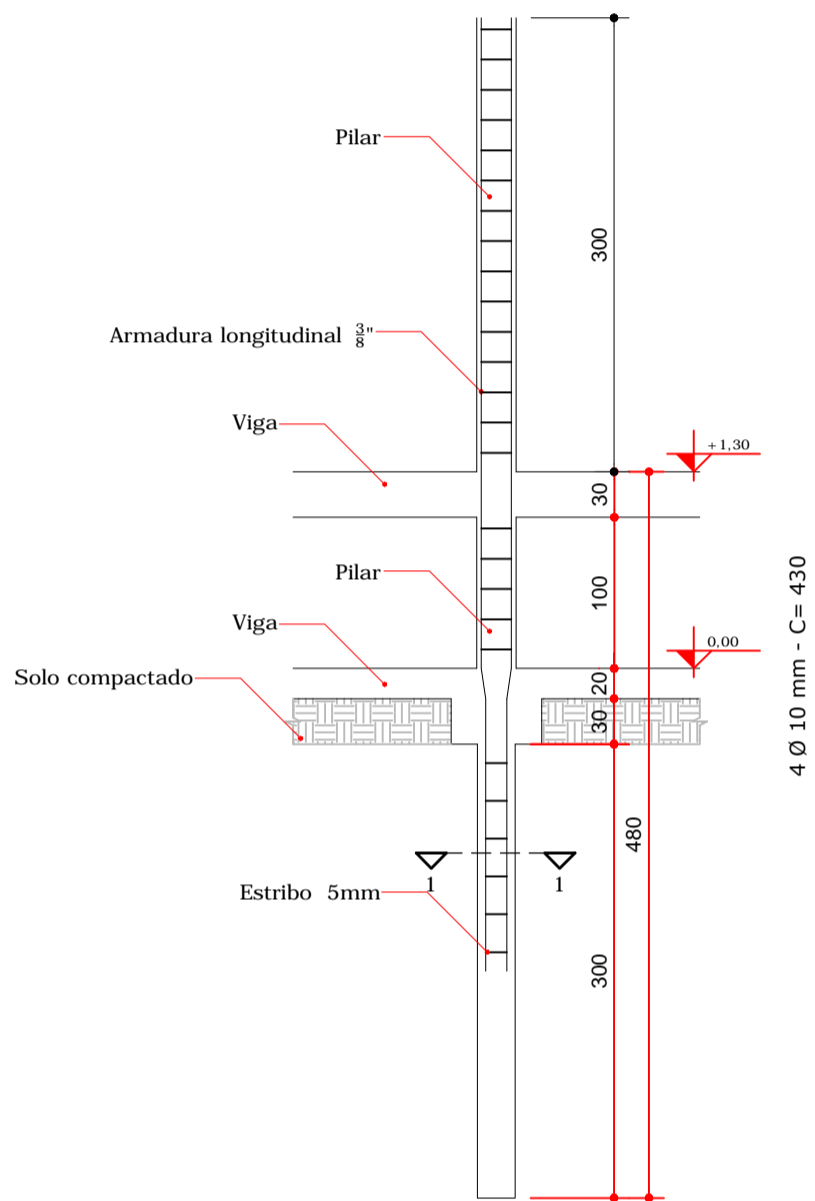
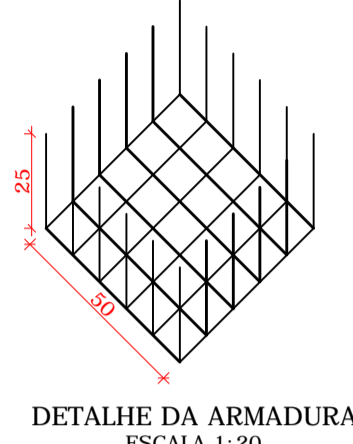
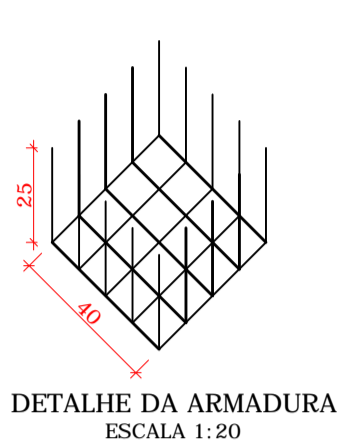
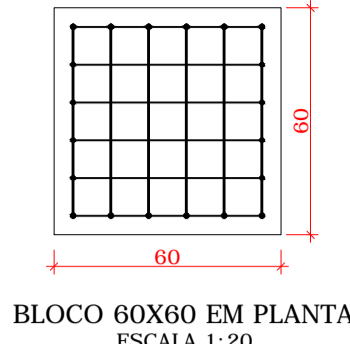
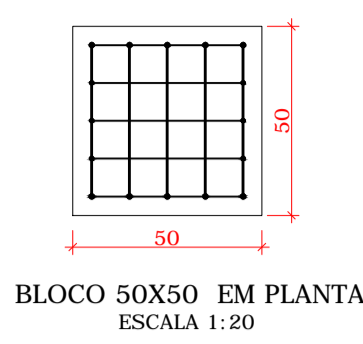
ESQUEMA VIGAS V-06=V-07=V-08
ESCALA 1:50



ESQUEMA VIGA V-09=V-12
ESCALA 1:50

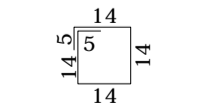
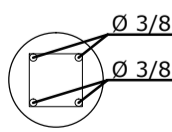


ESQUEMA VIGA V-11
ESCALA 1:50



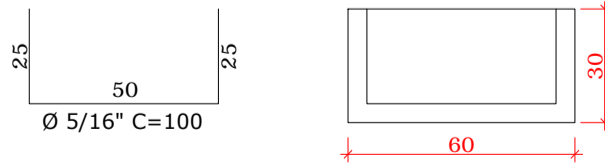
Corte longitudinal estaca Ø 25 mm
ESTACA COM BLOCO E PILAR

SEÇÃO 1-1 Ø25
ESCALA 1:20

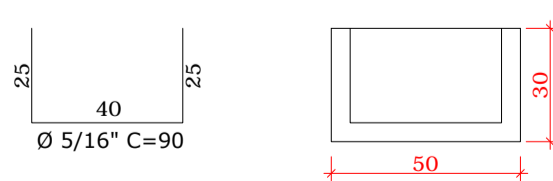


Ø 5,0mm - C=66
S = 25 cm

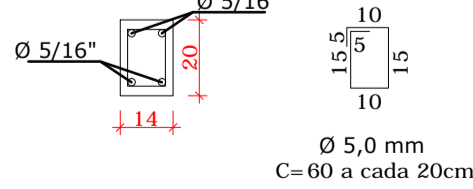
DETALHE BLOCO 60X60
ESCALA 1:20



DETALHE BLOCO 50X50
ESCALA 1:20



SEÇÃO VIGA
ESCALA 1:20



AMPLIAÇÃO DA ESCOLA MUNICIPAL DO CAMPO RUI BARBOSA			
01/04			
PLANTAS FUNDAÇÃO ESQUEMA VIGAS DETALHE ESTACA DETALHE BLOCOS SEÇÕES		PROPRIETÁRIO: Prefeitura Municipal de Contenda - PR Prefeito Carlos Eugênio Stabach	
AUTOR DO PROJETO: Engenheira Civil Daiana Priscila Souza Leite CREA-PR 184.547/D		RESPONSÁVEL TÉCNICO: Engenheira Civil Daiana Priscila Souza Leite CREA-PR 184.547/D	
D A T A OUTUBRO/2020	DESENHO DAIANA PRISCILA ESCOLA	End.: Av. João Franco n.º 400 Centro - Contenda/PR telefones= (041) 3625 1212 ; 99171268	